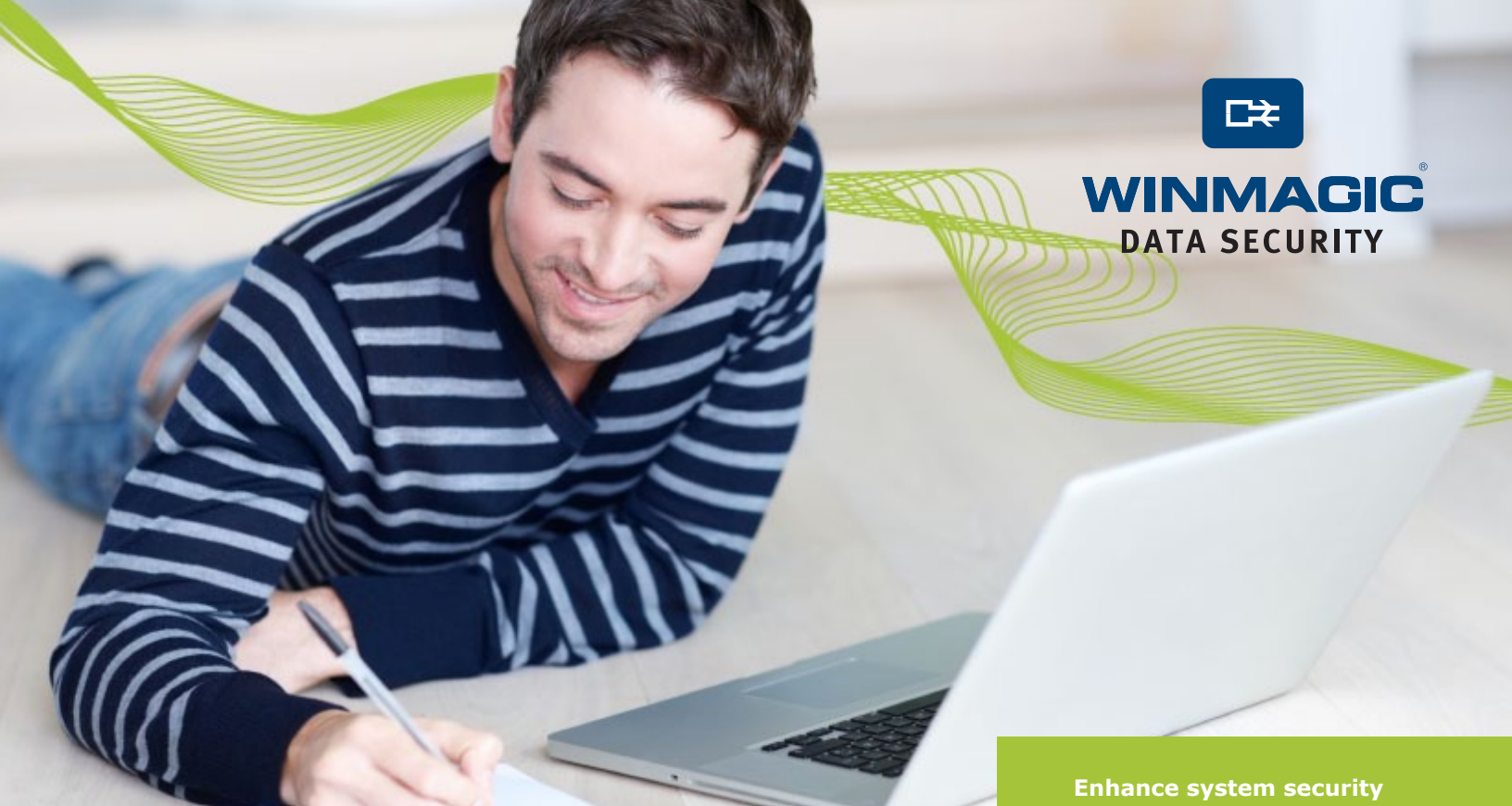




WINMAGIC[®]
DATA SECURITY



SECUREDOC™ FOR MAC OS X

Data Encryption for Mac Clients – Now Supporting FileVault2

Enhance system security and create a better user experience while at the same time reducing IT overhead costs.

WinMagic's SecureDoc for Mac is a leading industry solution offering full disk encryption (FDE) for Mac clients. With flexible Mac OS X security management options, administrators have the choice of using SecureDoc for Mac or the SecureDoc Enterprise Server (SES) FileVault 2 management.

SecureDoc offers one of the strongest Mac OS X FDE solutions available on the market today. For customers that prefer to leverage the native encryption and security offered by Mac OS X's FileVault 2 solution, SecureDoc can now manage that as well. FileVault 2 enterprise management gives businesses the flexibility to choose how they want to encrypt and manage their Apple devices yet still have the ability to have all their devices managed by SES's central management console.

SecureDoc for Mac can easily be deployed offering strong, centralized administration of users, keys and policies, SecureDoc for Mac integrates easily into mixed environments including seamless integration with Active Directory. SecureDoc for Mac offers 256-bit AES disk encryption and can be deployed as part of a centrally managed solution or as a standalone unmanaged solution.

WHY SECUREDOC

- Flexible options:
 - SecureDoc Software or;
 - FileVault 2 management
- Ensures end user productivity
- Maximum security and transparency
- Single security management console
- Centrally managed for Enterprise or Standalone



WinMagic's SecureDoc for Mac offers administrators choice and flexibility in their data encryption solution whether it's through client software or native FileVault 2 encryption security.



SecureDoc for Mac OS leverages pre-boot user authentication and works transparently ensuring there no noticeable performance difference to the user once the device is encrypted.

Being part of the SecureDoc family also means SecureDoc for Mac can also be managed via PBConnex, the only data encryption and management solution that allows for pre-boot network authentication.

As a core component of SecureDoc for Mac, PBConnex utilizes network-based resources to authenticate users, enforce access controls, and manage endpoint devices before the operating system loads. This unique and ground-breaking approach to Full Disk Encryption (FDE) management results in significant cost savings for organizations by streamlining both IT management and end user functionality.

SecureDoc for Mac provides a simple and reliable means to secure data by leveraging FDE with pre-boot authentication, support for removable media encryption (RME) and more.



Mobile Device Management for Mac & iOS

As a core component of SecureDoc for Mac, PBConnex utilizes network-based resources to authenticate users, enforce access controls, and manage endpoint devices before the operating system loads. This unique and ground-breaking approach to Full Disk Encryption (FDE) management results in significant cost savings for organizations by streamlining both IT management and end user functionality.

SecureDoc for Mac provides a simple and reliable means to secure data by leveraging FDE with pre-boot authentication, support for removable media encryption (RME) and more.

SecureDoc for Mac offers full support to manage standard hard drives and newer self-encrypting drives (SEDs) such as Seagate Momentus FDE drives and others that support the TCG OPAL standard.



sales@winmagic.com | www.winmagic.com